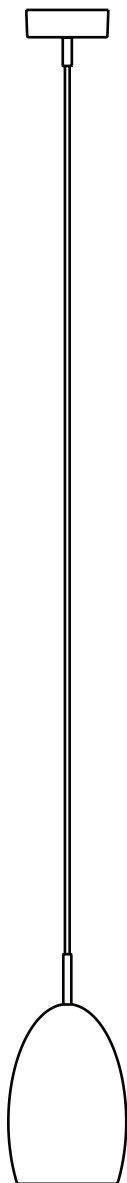
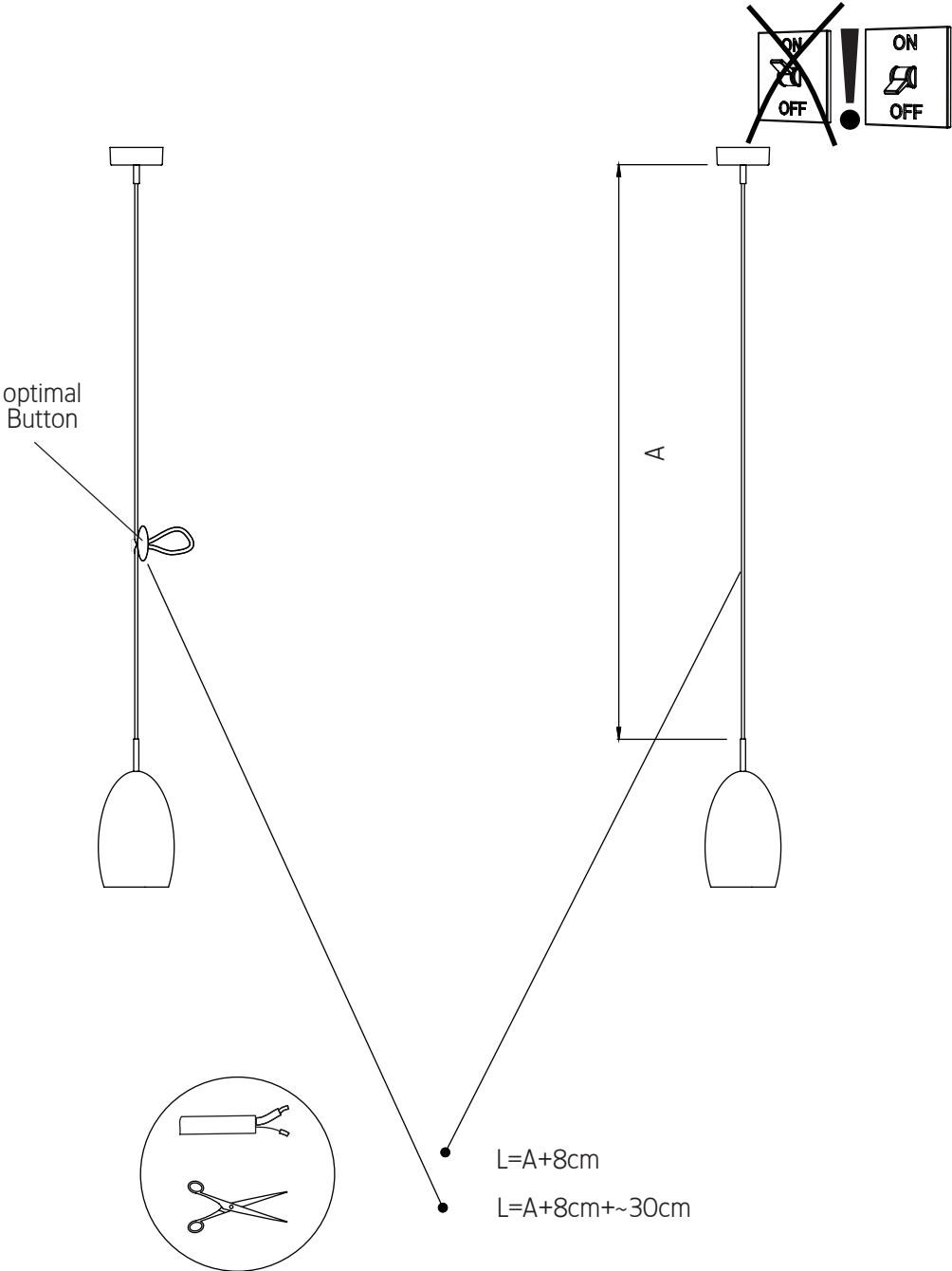


OH CHINA 11

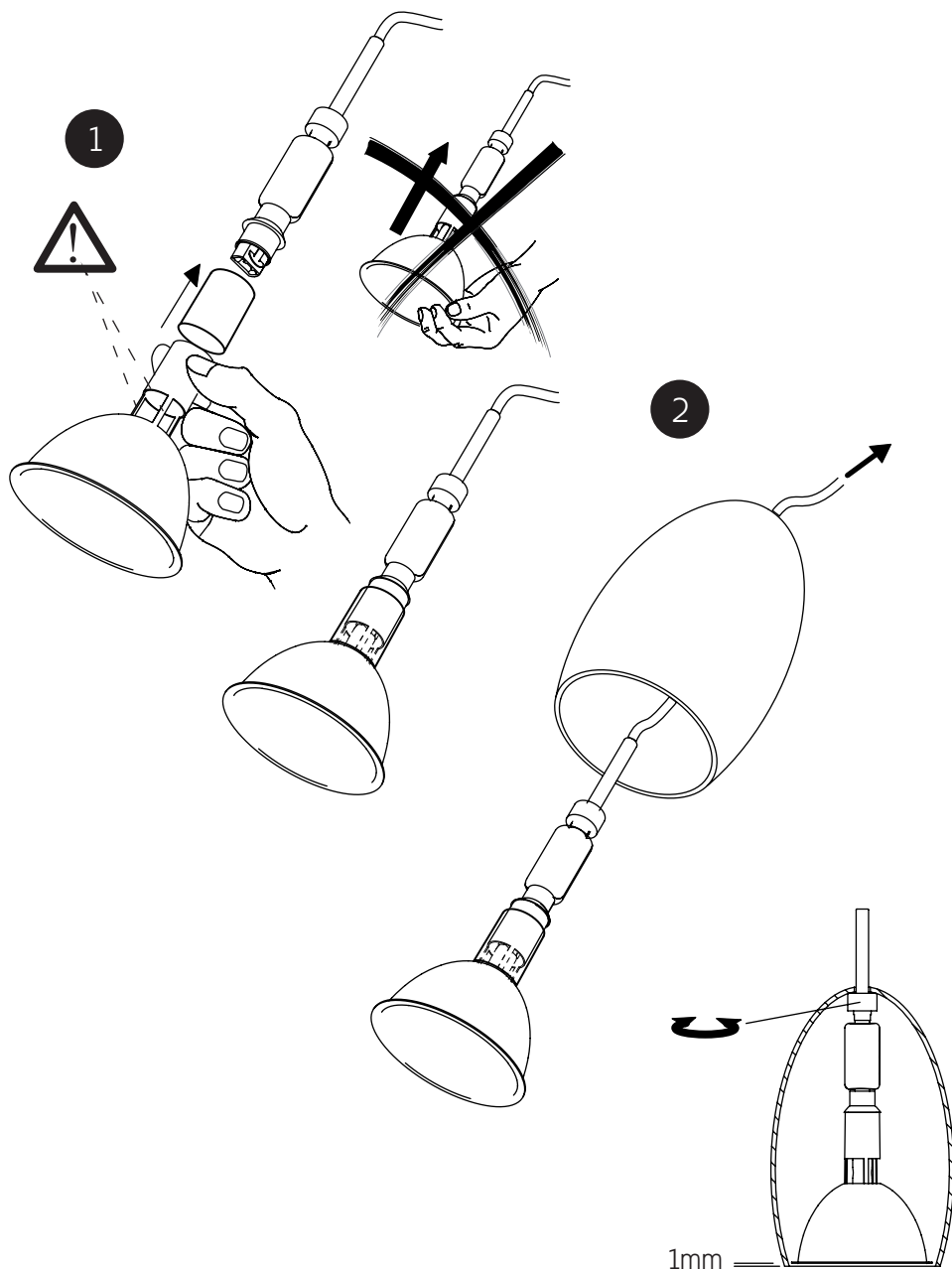


ROBASTGRAU

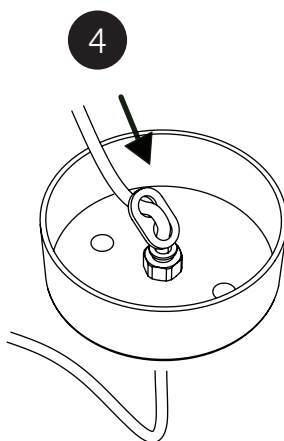
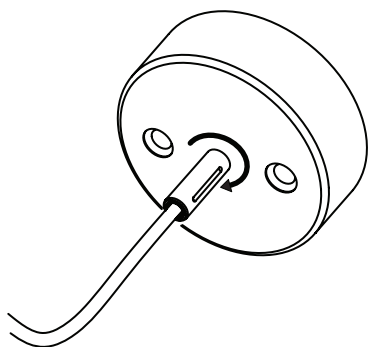
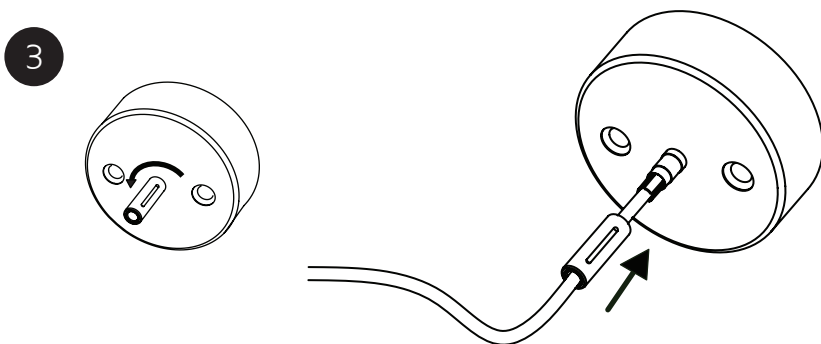
Ermittlung der Kabellänge • Determining the length of cable • Instruction pour la longueur des câbles • Preparazione lunghezza cavi



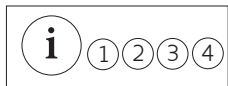
Anschluss der Leuchte • Connection of the light •
Branchement du luminaire • Installazione della lampada



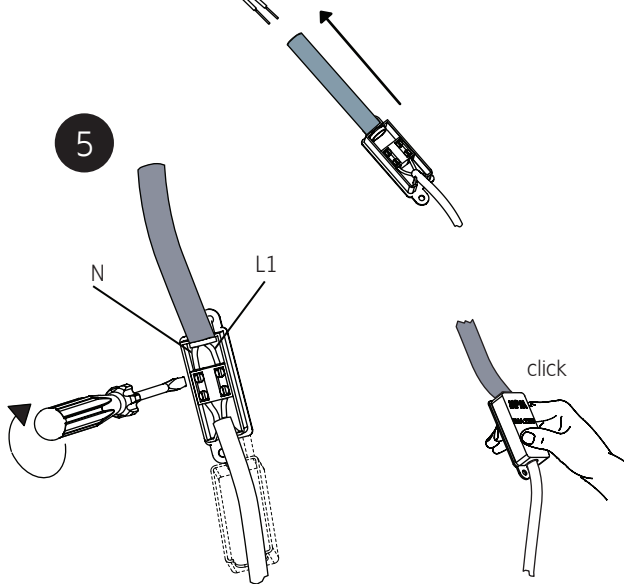
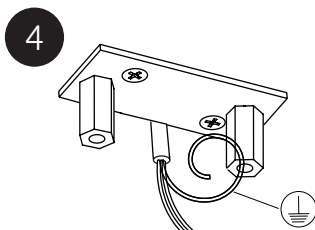
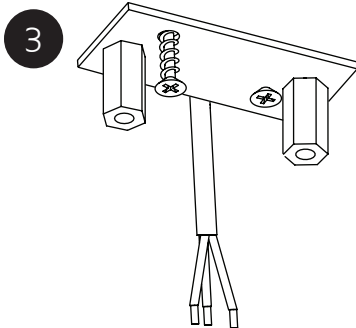
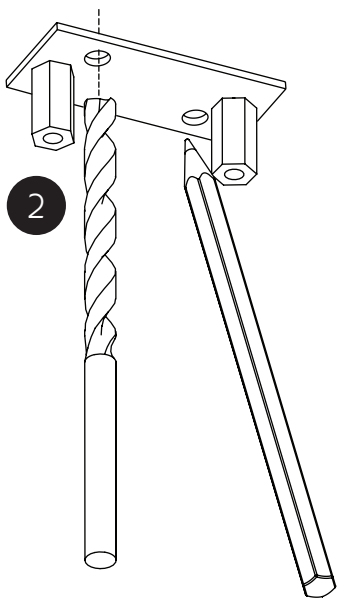
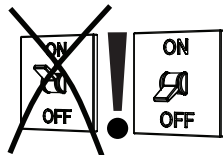
Einfädeln des Kabels • Threading the cable • Insertion du câble •
Inserimento del cavo



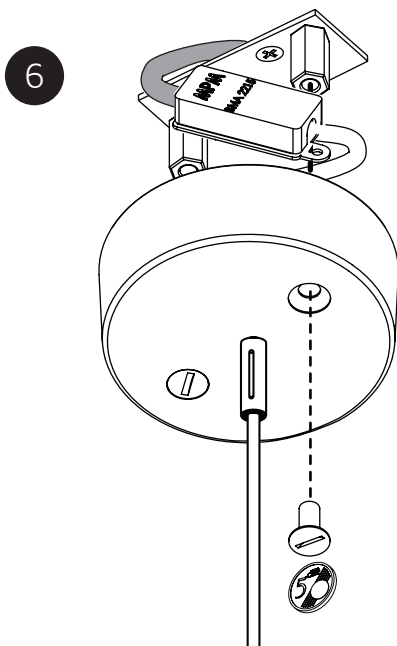
Anschluss der Leuchte • Connection of the light • Branchement du luminaire • Installazione della lampada



1

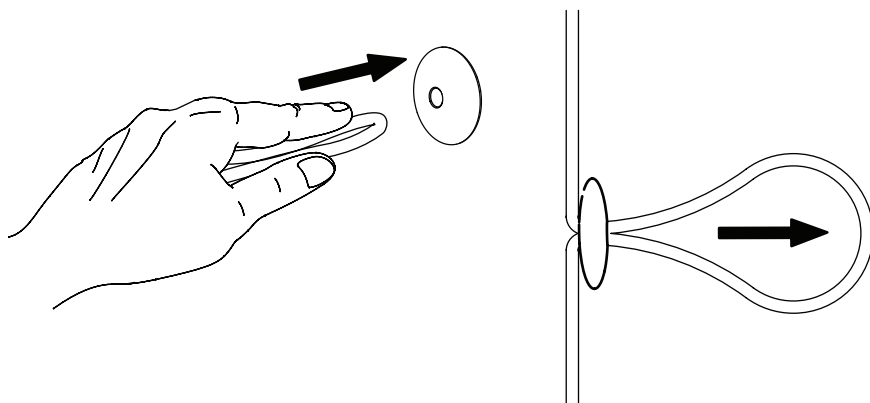


Anschluss der Leuchte • Connection of the light • Branchement du luminaire • Installazione della lampada

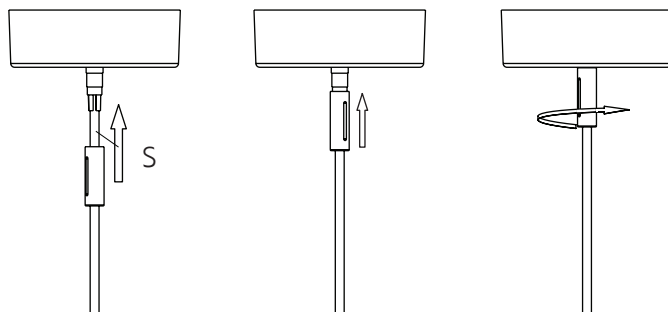
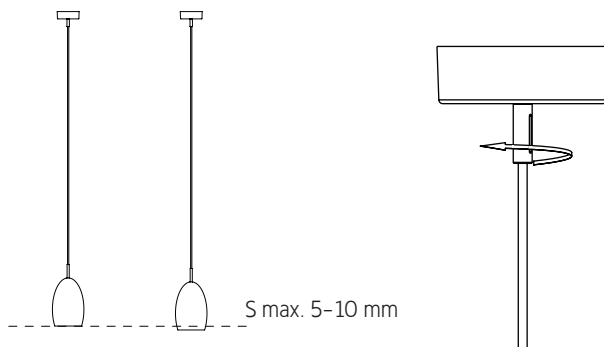


Button Montage

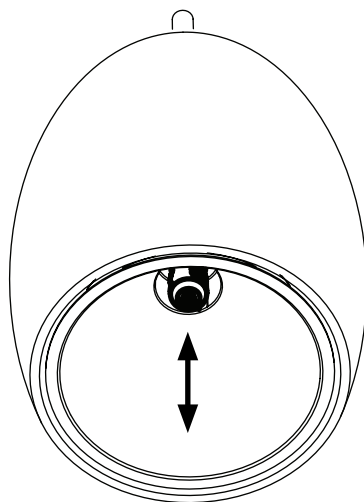
Höhenjustage • Height adjustment • Equilibrage • Aggiustamento in altezza



Höhenjustage • Height adjustment • Equilibrage • Aggiustamento in altezza







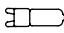


Wechseln des Leuchtmittels • Changing the means of illumination •
Changement de l'ampoule • Sostituzione della lampadina



i DEUTSCH

- ① Die Auswahl der richtigen Befestigungsmittel obliegt dem Installateur.
- ② Anschluß des Schutzleiters ist nicht notwendig
- ③ Flexible Tülle muss Einzelleitungen komplett umhüllen.
- ④ Dimmer für Halogen-Hochvoltlampen verwenden.
- ⑤ Lassen Sie das Leuchtmittel vor dem Wechsel abkühlen.
- ⑥ Den Glaskolben nicht mit den Fingern anfassen!
- ⑦ Verwenden Sie bitte ausschließlich Markenleuchtmittel wie z.B. von Osram und Philips.
- ⑧ Bitte beachten Sie:
Zur Reinigung der Oberfläche verwenden Sie bitte lauwarmes Wasser mit etwas Spülmittel und ein weiches Tuch. Das Reinigen muss in abgekühltem Zustand erfolgen.
Dieser Leuchenschirm ist aus Bone China hergestellt. Punkte, Schlieren und leichte Unebenheiten sind material gerecht, und geben jeder Leuchte ihren individuellen Charakter.







OH CHINA 11	
	Montage auf normal entflammaren Flächen zulässig.
	73/23/EWG 89/336/EWG
 0,5m 	Mindestabstand zu angestrahlten Flächen 0,5m!
	Niederdrucklampen verwenden!
	Schutzklasse 2
	G9 max. 75W / ES 60W

Garantie:

Sie haben ein hochwertiges Produkt erworben, welches mit Sorgfalt produziert und verpackt worden ist. Sollten Sie dennoch einmal Grund zur Beanstandung haben, wenden Sie sich bitte ausschließlich an Ihr Einrichtungs- bzw. Leuchtenhaus. Geben Sie bitte die auf der letzten Seite genannte Endkontrollnummer an. Ihre Reklamation wird bei uns im Hause umgehend bearbeitet. Bitte haben Sie Verständnis, dass eine Garantie unsererseits nur bei sachgemäßer Montage übernommen werden kann - wir empfehlen daher Fachbetriebe. Fragen Sie auch Ihr Einrichtungs- bzw. Leuchtenhaus diesbezüglich.

i ENGLISH

- ① It is the installer's responsibility to choose the correct fixing method.
- ② It is not necessary to connect the protective earthing conductor.
- ③ Flexible sleeve must protect the entire power supply wires.
- ④ Use dimmers for high-voltage halogen lamps.
- ⑤ Please let the lighting element cool down before changing.
- ⑥ Don't touch glass with fingers!
- ⑦ Please use exclusively brand name bulbs such as Osram and Philips.
- ⑧ Please notice:
To clean the surface, please use lukewarm water with a little washing-up liquid. Cleaning must only be carried out when the lamp is cool.
This lampshade is made in Bone China. Dots, streaks and slight unevenness are typical for this material and provide each lamp with its own unique character.






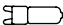
OH CHINA 11	
	Mounting on normally flammable surfaces permissible.
	73/23/EWG 89/336/EWG
	Minimum distance from lighted objects 0,5m!
	Use low pressure lamps!
	Protection class 2
	G9 max. 75W / ES 60W

Warranty:

You have acquired a high-quality product, which has been manufactured and packed with care. Should you nevertheless have grounds for complaint, please contact your local specialist furniture or lighting retailer, quoting the final inspection number as noted on the last page hereof. We will deal with your complaint immediately. This warranty applies only to products that have been fitted appropriately – we therefore recommend fitting by qualified personnel. Your local furniture or lighting specialist will be able to advise you accordingly.

i FRANÇAIS

- ① Le choix des moyens de fixations appropriés incombe à l'installateur.
- ② Le raccordement à la terre n'est pas nécessaire.
- ③ Le tube flexible doit recouvrir entièrement les câbles.
- ④ Utiliser un variateur pour ampoule halogène haute tension.
- ⑤ Laisser refroidir l'ampoule avant de la changer.
- ⑥ Ne pas toucher le verre avec les doigts!
- ⑦ Veuillez utiliser uniquement des ampoules de marque comme par ex. Osram et Philips.
- ⑧ Veuillez noter:
Pour le nettoyage des surfaces, veuillez utiliser de l'eau tiède avec un peu de produit vaisselle.
Le nettoyage doit s'effectuer uniquement lorsque la lampe est froide.
Cet abat-jour est fabriqué en Bone China. Les points, stries et petites irrégularités font partie intégrante du matériau mis en oeuvre et procurent à chaque lampe un cachet qui lui est propre.







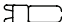
OH CHINA 11	
	Convient pour le montage sur surfaces normalement inflammables.
	73/23/EWG 89/336/EWG
	Distance minimale de la surface éclairée 0,5m!
	Utiliser des ampoules basse pression!
	Class de protection 2
	G9 max. 75W / ES 60W

Garantie:

Vous venez de faire l'acquisition d'un produit de haute qualité, fabriqué et emballé avec le plus grand soin. Si vous avez cependant un motif de réclamation, veuillez vous adresser immédiatement à votre magasin d'ameublement ou de luminaires, en indiquant le numéro de contrôle final mentionné à la dernière page. Notre société donnera suite sans tarder à votre réclamation. Vous comprenez aisément que nous ne pouvons assurer de garantie que dans le cas où le montage du matériel a été effectué correctement - par conséquent, nous vous recommandons de vous adresser à un spécialiste. Demandez conseil à votre magasin d'ameublement ou de luminaires.

i ITALIANO

- 1 La scelta del giusto materiale per l' attacco spetta all' installatore.
- 2 Connessione al cavo terra non necessaria
- 3 Il tubo flessibile deve proteggere completamente i cavi.
- 4 Utilizzare regolatori per lampade alogene.
- 5 Fate raffreddare la lampadina prima di cambiarla.
- 6 Non toccare il vetro con le dita!
- 7 Per favore utilizzare solo lampadine di marca come per es. Osram e Philips.
- 8 Avvertenze di manutenzione:
Per ripulire le superfici usare acqua tiepida con poco detersivo e un panno morbido.
Le lampade devono essere fredde durante la pulizia.
Questo paralume è in Bone China. Punti, strie e leggere asperità sono motivate dal materiale e conferiscono ad ogni lampada il suo carattere individuale.

OH CHINA 11	
	Montaggio su normali superfici infiammabili ammesso.
	73/23/EWG 89/336/EWG
	0,5m  Distanza minima dagli oggetti da illuminare 0,5m!
	Utilizzare lampade a bassa pressione!
	Classe di sicurezza 2
	G9 max. 75W / ES 60W

Garanzia:

Avete deciso di acquistare un prodotto d' alto valore, prodotto ed imballato con accuratezza. Qualora ci fossero motivazioni oggettive per un reclamo, indirizzarle immediatamente al vostro rivenditore o negozi specializzati. Indicare il numero di controllo finale riportato nell' ultima pagina. Il vostro reclamo verrà elaborato presso di noi. Considerate che da parte nostra possiamo assumere la garanzia del prodotto soltanto nel caso in cui il montaggio avvenga a regola d' arte: consigliamo dunque di rivolgersi ad aziende d' installazione specializzate; chiedere anche a tal riguardo al vostro rivenditore o a negozi specializzati.

Endkontrollnummer	2 Jahre Garantie
Final inspection number	2 years guarantee
Numéro de contrôle final	2 ans de garantie
Numero di controllo finale	2 anni di garanzia