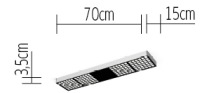
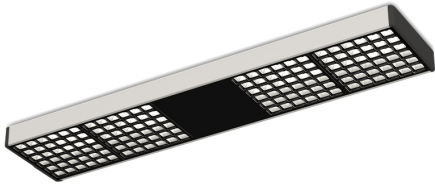


**XT-A DIRECT 70x15 satin/black 2700 K**  
XA73-0



**TECHNICAL SPECIFICATIONS**

Lamp holder	LED
Light emission	direct
Light distribution	symmetric
Level of light output efficiency	100 %
Luminaire luminous flux	2016 lm
Colour temperature	2700 K
Colour rendering index (CRI)	> 90
White impression	warm white
Rated voltage (range)	220-240 V
Power frequency	50 / 60 Hz
Power consumption (maximum)	31 W
Surface	satined
Housing material	aluminium
Type of lamp control gear	Driver
Ballast included	Yes
Protection class	I
Colour of the grid	translucent black
Connection cable (number of cores)	3
Energy efficiency	A - A++
Dimmable	Yes
Type of Dimmer	phase rotary dimmer
Material of the grid	plastic
Material of the cover	plastic
Length	700 mm
Width	150 mm
Height	36 mm
Head adjustable	No
Fire protection "F"	Yes